

95 Cedar Street, Suite 100
 Providence, Rhode Island 02903
 800.885.7897 | www.woodardcurran.com

WOODARD & CURRAN
 COMMITMENT & INTEGRITY DRIVE RESULTS

THIS DOCUMENT IS THE PROPERTY OF WOODARD & CURRAN, INC. AND ITS AFFILIATES. REPRODUCTION OR DISSEMINATION WITHOUT WRITTEN PERMISSION IS PROHIBITED.

REV	DESCRIPTION	DATE
1	STORMWATER MANAGEMENT SYSTEM REVISIONS	7/7/09

DESIGNED BY: FJC
 CHECKED BY: DAW
 DRAWN BY: FJC
 2009-07-08-09:00

SITE PREPARATION & DEMOLITION PLAN

NEW ENGLAND METALS RECYCLING
 69 ROVER STREET
 EVERETT, MA

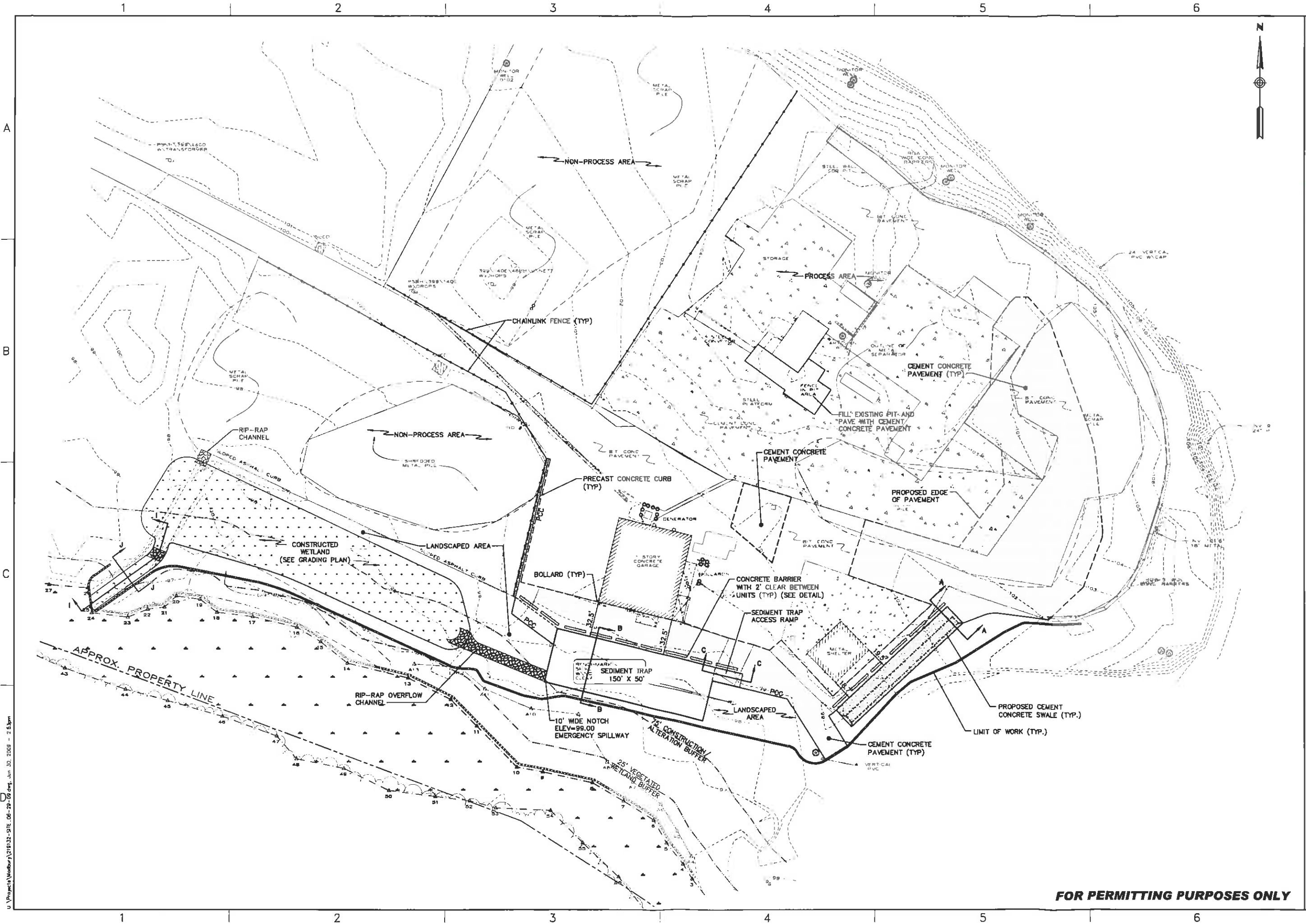
STORMWATER IMPROVEMENT PROJECT
 KNOX MARSH ROAD
 MADBURY, NH

JOB NO: 21913200
 DATE: JUNE 12, 2009
 SCALE: 1"=40'
 SHEET: 4 OF 8

C202

FOR PERMITTING PURPOSES ONLY

D:\Projects\Madbury\19132_SIT_06-29-09.dwg, Jun 30, 2009, 2:53pm



98 Cedar Street, Suite 100
 Providence, Rhode Island 02903
 800.955.7897 | www.woodardcurran.com

WOODARD & CURRAN
 COMMITMENT & INTEGRITY DRIVE RESULTS

REV	DESCRIPTION	DATE
1	STORMWATER MANAGEMENT SYSTEM REVISIONS	17/09

DESIGNED BY: FJC
 CHECKED BY: DAW
 DRAWN BY: FJC

SITE LAYOUT PLAN

NEW ENGLAND METALS RECYCLING
 68 ROVER STREET
 EVERETT, MA

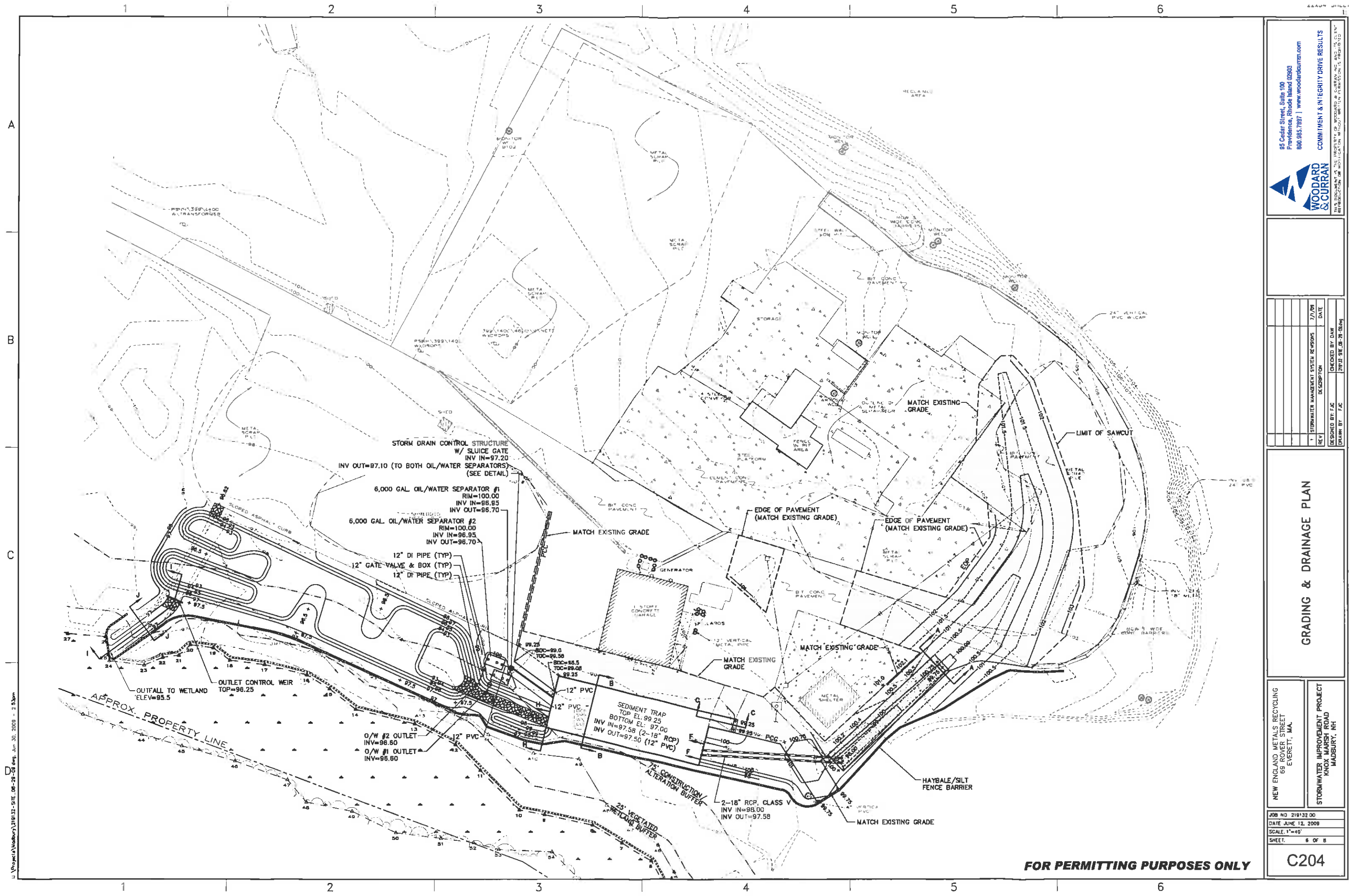
STORMWATER IMPROVEMENT PROJECT
 KNOX MARSH ROAD
 MADBURY, NH

JOB NO. 219132.03
 DATE: JUNE 12, 2009
 SCALE: 1"=40'
 SHEET: 5 OF 8

C203

FOR PERMITTING PURPOSES ONLY

U:\Projects\Madbury\319132-SITE_06-29-09.dwg, Jun 30, 2009 - 2:53pm



U:\Project\Woodbury\210132-51E_06-26-08.dwg, Jun 30, 2008 - 2:53pm
 D

95 Cedar Street, Suite 100
 Providence, Rhode Island 02903
 800.983.7837 | www.woodardcurran.com

WOODARD & CURRAN
 CIVIL ENGINEERING ARCHITECTURE INTERIOR DESIGN

COMMITMENT & INTEGRITY DRIVE RESULTS

REV	DESCRIPTION	DATE
1	STORMWATER MANAGEMENT SYSTEM REVISIONS	7/7/08
DESIGNED BY	DAW	
CHECKED BY	FJC	
DRAWN BY	FJC	
		2013 210132-06-26-08.dwg

GRADING & DRAINAGE PLAN

NEW ENGLAND METALS RECYCLING
 69 ROVER STREET
 EVERETT, MA.

STORMWATER IMPROVEMENT PROJECT
 KING MARSH ROAD
 MADBURY, NH

JOB NO 210132 00
 DATE June 12, 2008
 SCALE 1"=40'
 SHEET 6 OF 8

C204

FOR PERMITTING PURPOSES ONLY